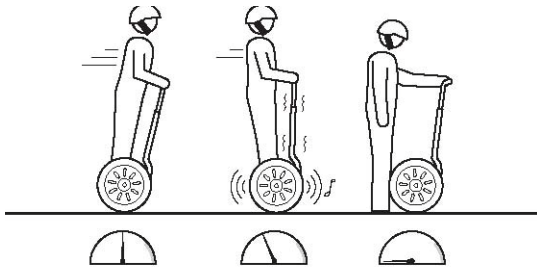




## Understanding the Safety Shutdown



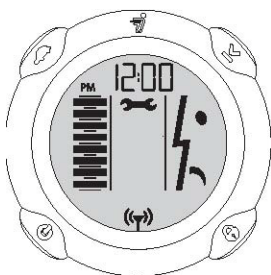
### Safety Shutdown

If the Segway PT detects a fault in any of its redundant systems, it performs a *Safety Shutdown*. Those systems include: Controller Boards, Motors, Batteries, the Balance Sensor Assembly, and LeanSteer Sensors.

**You have approximately 10 seconds from the start of a Safety Shutdown to come to a controlled stop and step off. The Segway PT will then power down and if you are still standing on the Mats when that happens, you will probably fall.**

**Never** restart and ride your Segway PT after it has indicated an empty battery condition or performed a Safety Shutdown due to low battery.

- The Segway PT may not have enough power to keep you balanced, especially if you demand a lot of power at once.
- You risk damaging your batteries, resulting in reduced battery life and capacity.



**The only time you will find the Unhappy Face on your InfoKey is when the Segway PT is performing a Safety Shutdown. When you see this face, quickly come to a controlled stop and step off the Segway PT.**

When a Safety Shutdown occurs the Segway PT automatically:

- Reduces its speed
- Gives the Stick Shake Warning (vibrates and growls)
- Flashes the Balance Indicator lights **RED** (those are the normally rotating green lights between your feet)
- Emits a warning tone that increases in volume
- The InfoKey Controller displays an Unhappy Face.